

# Claire II

Line Interactive True Sinewave **UPS**

**SmartPower**  
*Your Smart choice for UPS*



## CLAIRE II 1000

LINE-INTERACTIVE PURE SINE WAVE UPS

Capacity: 1k

### ➤ KEY FEATURES

- Pure Sine Wave Output
- GreenPower UPS Technology
- Automatic Voltage Regulation (AVR)
- Auto-Restart/Auto-Charge
- User-friendly LCD Display
- Generator Compatible
- Cold Start Function
- Off-mode Charging
- USB port
- Input Fuse Breaker 10A
- Outlet Surge Protection
- SW free download on our website
- CE standard

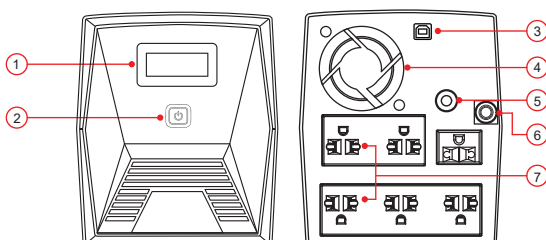


**The Sun Power Co.,Ltd.**  
31 Soi Prachautit 59, Yeak 5,  
Bangmod,Thungkru,  
Bangkok 10140 THAILAND.

Tel. 02-872-9501/4 Fax.02-872-9505  
WWW.THESUNPOWER.CO.TH  
Email. SaleContact@thesunpower.co.th

Specification	CLAIRE II 1000
Capacity	1000VA / 700W
<b>Input</b>	
Voltage Range	165-290 VAC
Frequency Range	50/60 Hz $\pm$ 10%
Phase	Single Phase with Ground
Generator Input	Support
<b>Output</b>	
Voltage Range	220 VAC $\pm$ 10%
Voltage Range (Batt.Mode)	220 VAC $\pm$ 5%
Frequency Range	50 Hz $\pm$ 0.1%
Output Wave form	Pure Sine Wave
Outlet	Universal x 6 outlets
<b>Overload Rating</b>	
>110 $\pm$ 10%	Fault after alarm 1 min
>120 $\pm$ 10%	Fault immediately
<b>Battery</b>	
Battery type	12V/7Ah or 9Ah (Sealed Lead-Acid Maintenance Free with suspended electrolyte) or on requested
Number of Battery	2 pcs.
Backup time	15-30 mins depend on load
Recharge Time	< 8 hrs to 90%
<b>Transfer Time</b>	
Transfer Time	4 ms.
<b>Indicator</b>	
LCD display	AC mode, Battery mode, Fault
<b>Audible Alarm</b>	
Battery Mode	Sounding every 30 seconds
Low Battery	Sounding every 2 second
Overload	Sounding every 0.5 second
UPS Fault	Continuously Sounding
<b>Dimension</b>	
Tower Case (WxDxH)(mm)	148 x 178 x 298 mm
<b>Weight</b>	
Tower Case(kg)	13.5 kg
<b>Environment</b>	
Operation Environment	0-40°C
Relative Humidity	0-90% @ 0-40°C (Non-Condensing)
Noise Level	<45dB @ 1 Meter
<b>Interface</b>	
Smart RS-232 / USB	S/W supports Windows Family
<b>International Standard</b>	
TIS	TIS1291 Part 1-2553, TIS1291 Part 2-2553, TIS Part 3-2555 Class C1
CE	EN IEC 62040-2 : 2018(C2) ; EN61000-3-2 : 2014; EN61000-3-3 : 2013
External Protection	IP20(Static)
Transportation	Drop: ISTA 1A Vibration: Internal standard

Specification are subject to change without prior notice.



#### ส่วนประกอบภายนอก

1. Display LCD
2. Power On/Off
3. USB Port
4. Fan
5. Fuse Breaker
6. AC Input
7. Output Receptacles



**The Sun Power Co.,Ltd.**  
31 Soi Prachautit 59, Yeak 5,  
Bangmod, Thungkru,  
Bangkok 10140 THAILAND.

Tel. 02-872-9501/4 Fax. 02-872-9505  
WWW.THESUNPOWER.CO.TH  
Email. SaleContact@thesunpower.co.th